

# Valentine's Day Message ORDER FORM



1. Complete this order form.
2. Complete and attach a personalized *Valentine's Day Message* to be delivered with each item.
3. Bring order form, messages and payment to the school office NO LATER THAN 9:00 a.m. on Thursday, February 9<sup>th</sup>.
4. Orders will be filled on a 'first come, first served' basis. There are limited quantities of ALL items and we reserve the right to substitute items of equal or greater value!
5. Orders will be delivered to students and teachers on Tuesday, February 14.

*"Valentine's Day Messages"* are sponsored by the Senior Class of 2012.  
All proceeds will benefit their mission trip to the Dominican Republic in April.

Your name: \_\_\_\_\_

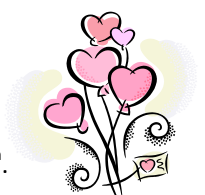
NAME of student or teacher to receive <i>Valentine's Day Message</i>	GRADE	<i>Chocolate Lollipop</i> \$1 each	<i>Conversation Heart Candies</i> 50¢/box	<i>MYLAR Balloon</i> \$2.50 each	<i>Carnation</i> \$1.50 each
		QTY:	QTY:	QTY:	QTY:
		QTY:	QTY:	QTY:	QTY:
		QTY:	QTY:	QTY:	QTY:
		QTY:	QTY:	QTY:	QTY:

Additional order forms are available outside the school office and are also posted in the "News & Calendar" section of [www.WestlakeChristian.org](http://www.WestlakeChristian.org).

Sub-Total \$ \_\_\_\_\_ \$ \_\_\_\_\_ \$ \_\_\_\_\_ \$ \_\_\_\_\_

**TOTAL AMOUNT: \$**

# Valentine's Day Message ORDER FORM



6. Complete this order form.
7. Complete and attach a personalized *Valentine's Day Message* to be delivered with each item.
8. Bring order form, messages and payment to the school office NO LATER THAN 9:00 a.m. on Thursday, February 9<sup>th</sup>.
9. Orders will be filled on a 'first come, first served' basis. There are limited quantities of ALL items and we reserve the right to substitute items of equal or greater value!
10. Orders will be delivered to students and teachers on Tuesday, February 14.

*"Valentine's Day Messages"* are sponsored by the Senior Class of 2012.  
All proceeds will benefit their mission trip to the Dominican Republic in April.

Your name: \_\_\_\_\_

NAME of student or teacher to receive <i>Valentine's Day Message</i>	GRADE	<i>Chocolate Lollipop</i> \$1 each	<i>Conversation Heart Candies</i> 50¢/box	<i>MYLAR Balloon</i> \$2.50 each	<i>Carnation</i> \$1.50 each
		QTY:	QTY:	QTY:	QTY:
		QTY:	QTY:	QTY:	QTY:
		QTY:	QTY:	QTY:	QTY:
		QTY:	QTY:	QTY:	QTY:

Additional order forms are available outside the school office and are also posted in the "News & Calendar" section of [www.WestlakeChristian.org](http://www.WestlakeChristian.org).

Sub-Total \$ \_\_\_\_\_ \$ \_\_\_\_\_ \$ \_\_\_\_\_ \$ \_\_\_\_\_

**TOTAL AMOUNT: \$**